

S.W. 1/4 OF SECTION 29, T.7N., R.1W., S.L.B. & M.

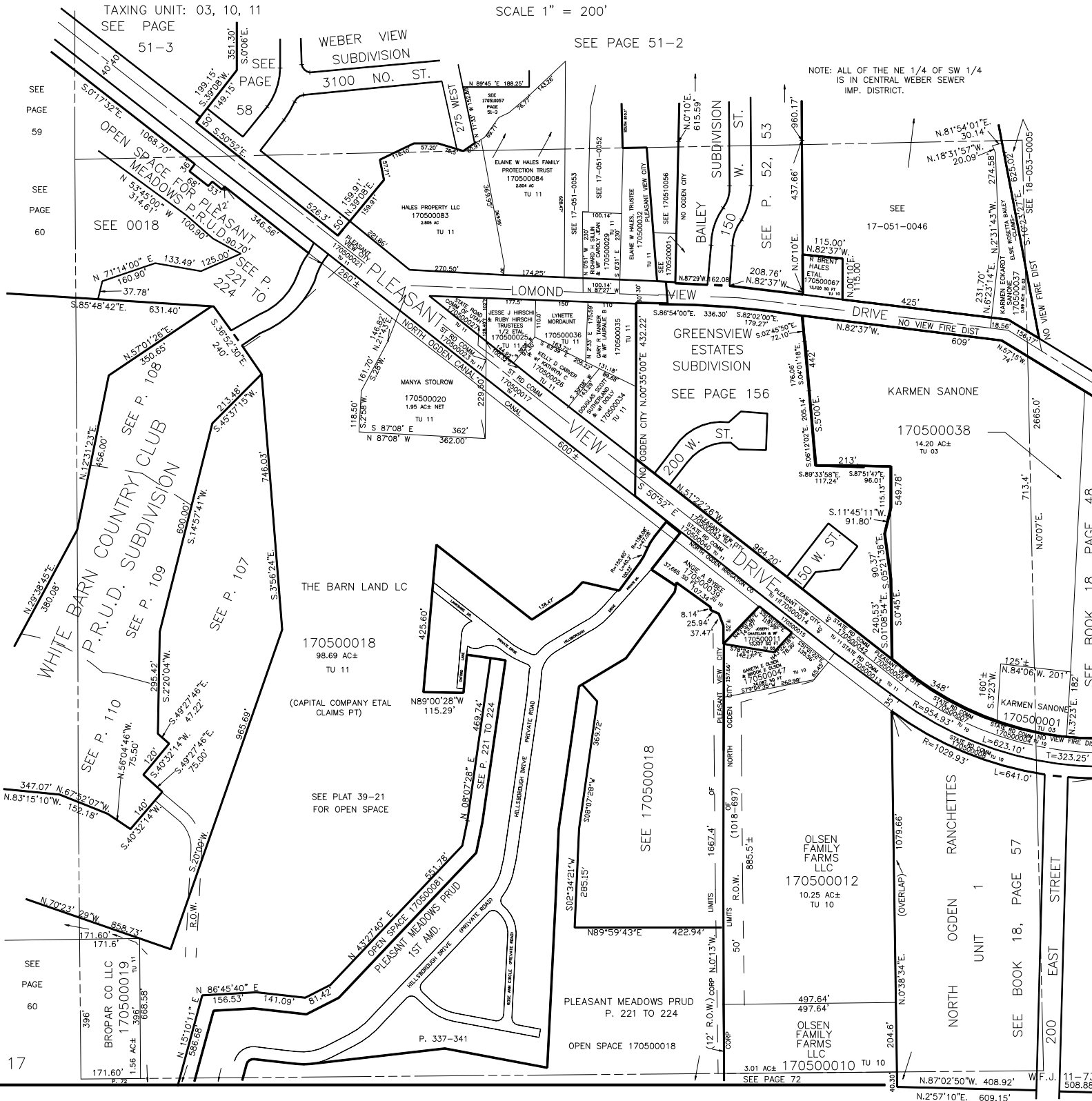
IN NORTH OGDEN CITY, TOWN OF PLEASANT VIEW, WEBER COUNTY

SCALE 1" = 200'

TAXING UNIT: 03, 10, 11  
SEE PAGE 51-3

SEE PAGE 51-2

NOTE: ALL OF THE NE 1/4 OF SW 1/4 IS IN CENTRAL WEBER SEWER IMP. DISTRICT.



SEE PAGE 59

SEE PAGE 60

SEE PAGE 60

SEE PAGE 60

17

SEE BOOK 18, PAGE 48

SEE BOOK 18, PAGE 57

SEE PAGE 72

11-73  
508.88'